



ERNSTHOMES

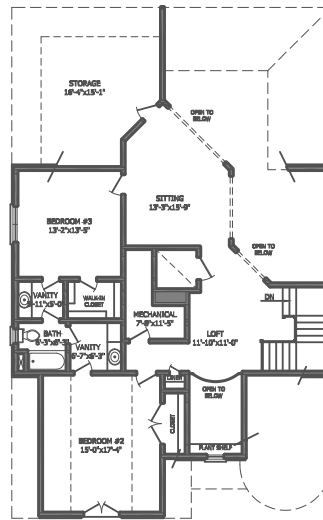
Welcome Home to a beautiful custom built residence finished with the finest workmanship and attention to detail.

You'll enjoy seven miles of spectacular Old Hickory Lake shoreline. The premier and immaculately conditioned Fairvue Foxland and Fairvue Lake Golf Courses. A Private club. Early morning walks. Pool side splashing and sunning. Stylish, gourmet dining. Living with history as a neighbor and metropolitan shopping, culture, and entertainment at your fingertips.

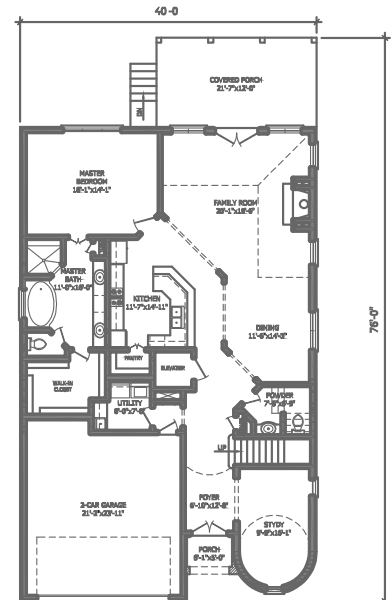
Fairvue Plantation. Nashville's North Shore.



AT FAIRVUE PLANTATION



Upper Level



Main Level

See back for detailed home specifications

The Glenmoore

1167 Chloe Drive Gallatin, TN

Home Site:574

Specifications

- Approximate Square Ft: 3,200
- Great Room 20 x 20
- Formal Dining Room 11 x 14
- Kitchen 12 x 15
- Owner's Suite 18 x 14
- Foyer 15 x 7
- Study 12 x 10
- Bedroom 2 12 x 14
- Bedroom 3 14 x 14
- Utility Room 7 x 9
- Covered Lanai 11 x 20
- 2 Full Baths
- 1 Half Bath
- Covered Front Porch
- Elevator Ready

Exterior

- Golf Course home with great course views of "Gracie Lake"
- Brick exterior with "weeping mortar"
- Stone on the front elevation
- Large covered Lanai with Belgard Paver floor
- 30 year dimensional asphalt shingles
- Mahogany Front Entry Door
- Expertly designed and landscaped and sodded yard with Automatic Irrigation System
- Insulated Garage Door with belt drive opener
- Gas Lanterns
- Peachtree Clad Low "E" Windows
- Stone Paver Driveway

Interior

- 10' to 20' ceilings throughout the main floor
- Vaulted 20' ceilings in the Great Room with loft overlook
- Tray ceiling in the Owner's Suite
- Custom maple cabinets throughout
- Marble countertop in the Owner's Bath
- Granite countertops in the kitchen and power bath
- 42" Inset Fireplace with granite tile surround and remote control start gas logs
- Bamboo hardwood floors in the Foyer, Dining Room, Study, Hallways, Great Room and Kitchen.
- Extensive Interior Trim
- Natural Stone Floors
- Utility Room features custom cabinetry, solid surface tops, and deep well sink.
- Large tiled master shower with body sprays and a spa shower head
- Large walk in closet featuring closet organization system
- GE Security System
- Upgraded lighting package
- Gourmet Stainless Kitchen Appliance Package featuring: a 42" Kitchen Aid Refrigerator/Freezer with cabinet panels, Kitchen Aid Stainless Steel Gas Cook-top with vented hood, Kitchen Aid Stainless Steel Double Ovens, Kitchen Aid Stainless Steel Microwave, and Bosch Dishwasher with cabinet panels.

Offered at \$749,000

Information is believed to be accurate but not guaranteed.
Floor plan, room sizes, and prices are subject to change

Call Mark, Steve, or J.R. @ 615.822.1727 about "The Glenmoore"
or additional ErnstHomes & Home Sites.

www.ernsthomes.net